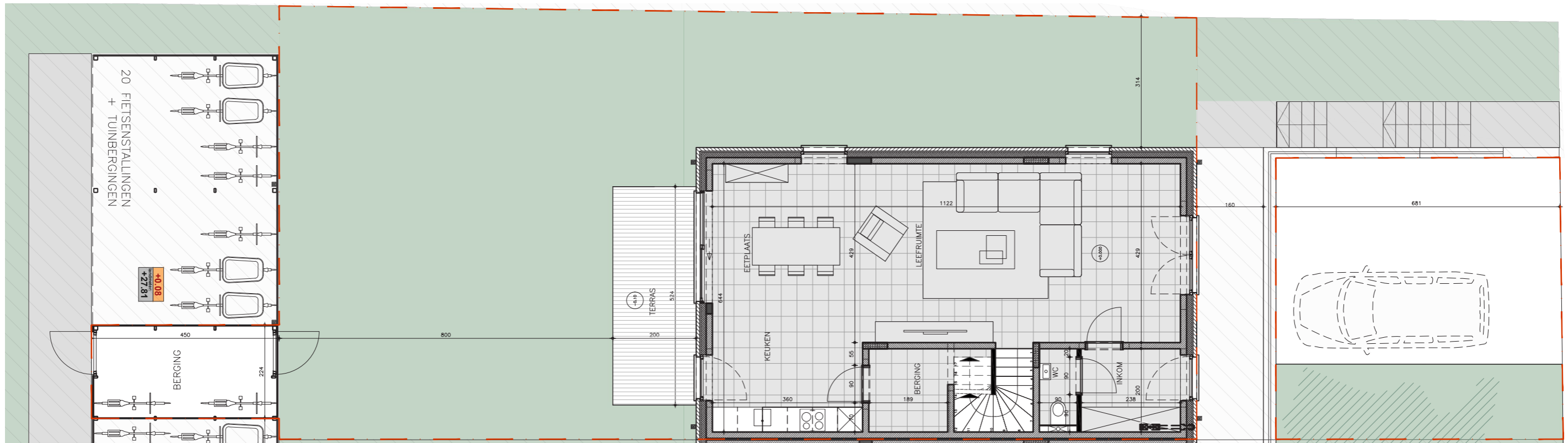
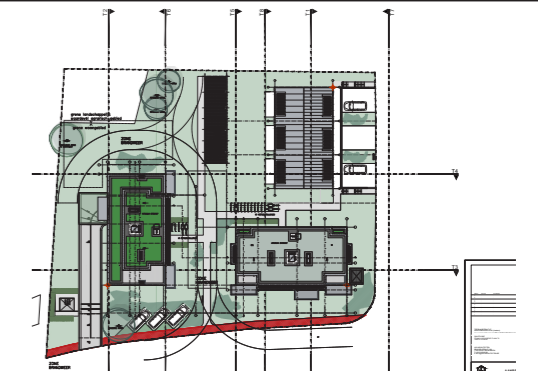

4	2		
		GV: 84,00 m ²	Tuin: 131,77m ²
		1e: 80,46 m ²	Terras: 10,48 m ²
		2e: 29,39 m ²	oprit: 34,39 m ²
		Totaal: 193,85 m ²	Totaal: 176,64 m ²



Gelijkvloers

INPLANTING:





4



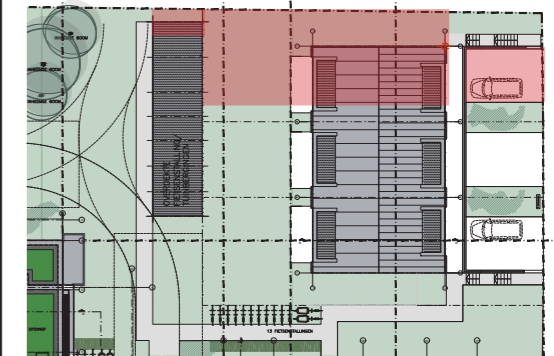
2



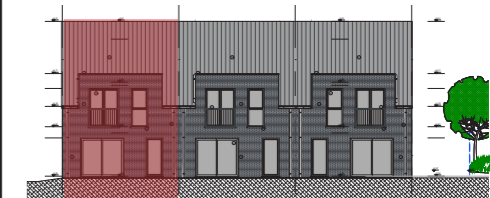
GV: 84,00 m²
1e: 80,46 m²
2e: 29,39 m²



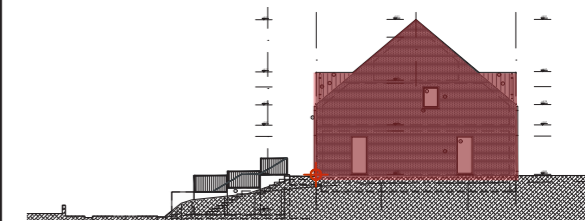
Tuin: 131,77 m²
Terras: 10,48 m²
oprit: 34,39 m²



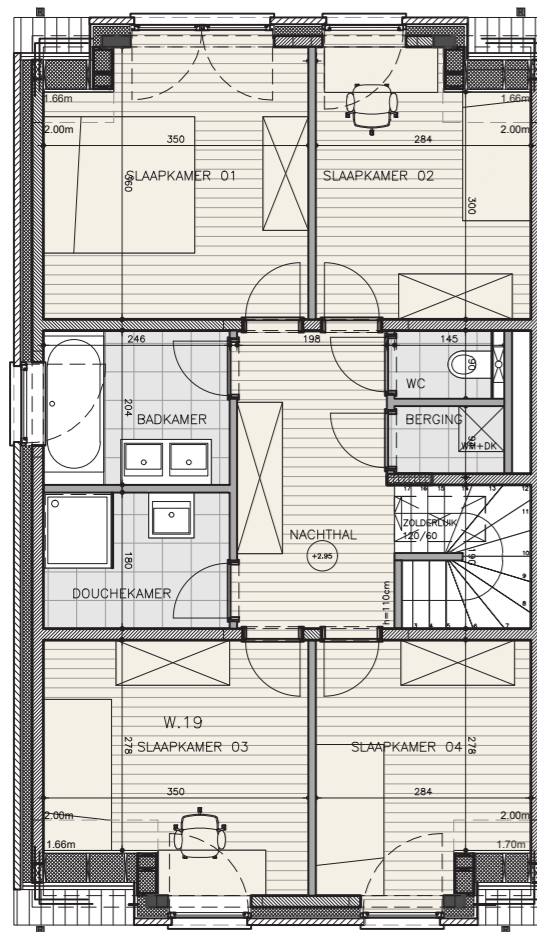
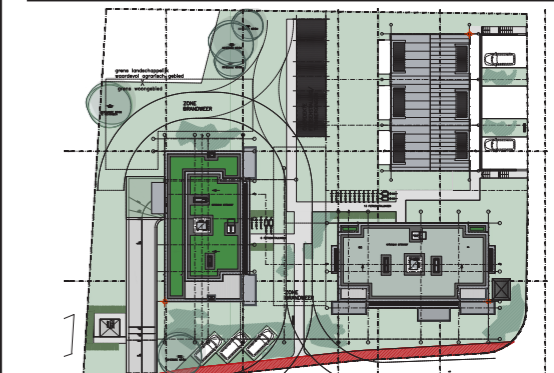
Voorgevel



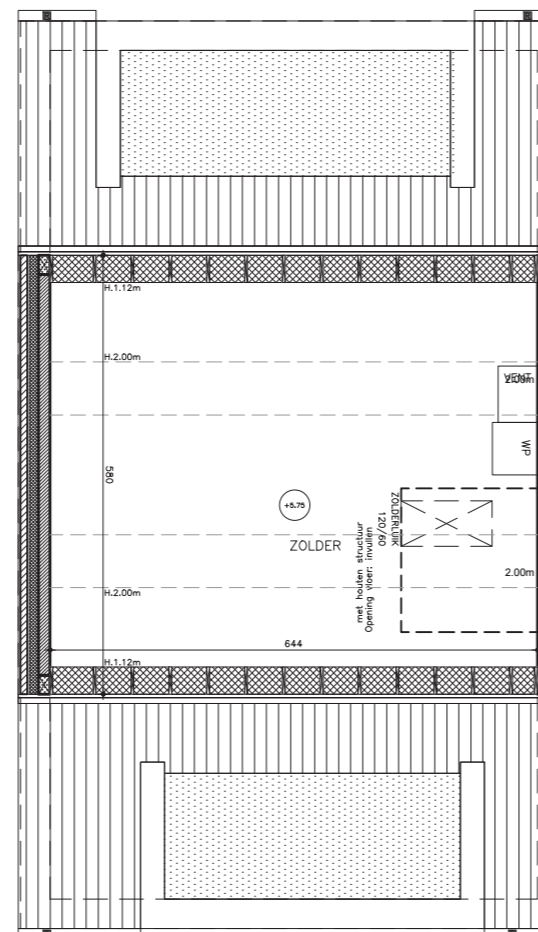
Achtergevel



Zijgevel rechts



Verdieping +01



Zolder

